

HPB TECHNOLOGY CO., LTD.



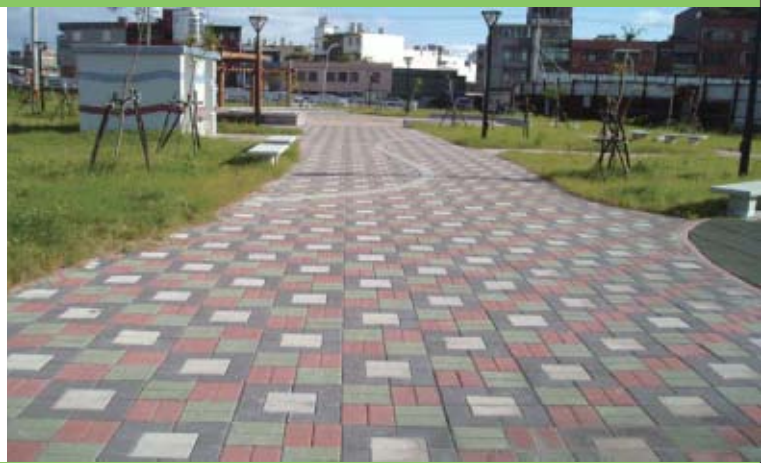
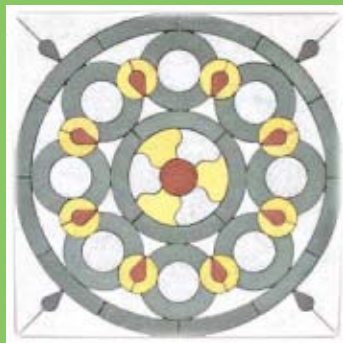
Water Permeable Brick

W/P/B



www.hpb.com.tw





Water Permeable Bricks (EP Brick)

EP brick is composed of recycled glass and ceramic wastes, mixed together with high polymer in computer aided temperature controlled procedures.

Glass+Ceramic Aggregates and Bonding Material



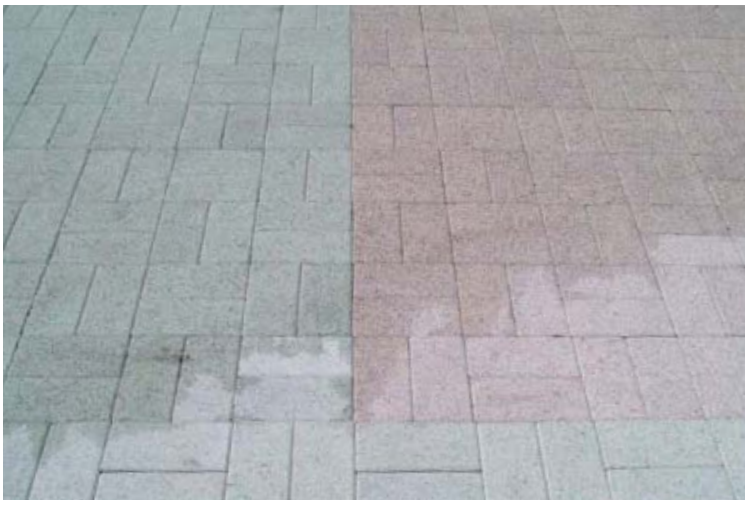
Non-permeable construction materials, such as bitumen and cement, largely used in urban construction, are indirectly destroying the ability for the earth to retain and store water and results in flooded rivers whenever it rains, and dry riverbeds during a drought.

Our EP Construction Material is capable of permeated water into the earth, not only providing flood diffusing but also contributing to temperature control.



Excellent water permeability and air ventilation increase water-preservation of the strarum, also facilitates in draining floods and controlling temperature.

The rough surface of EP brick is anti-skidding to improve pedestrian safety.



- Easy installation, aesthetic and environmental friendly
- High-Pressure molding with a high degree of hardness
- Wear resistance, strong resistance to crack and chip

Regenerated Building Materials

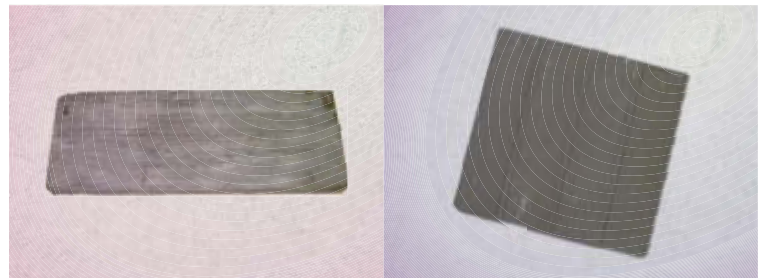
Excellent water permeability and ventilation functions superior than traditional cement and asphalt pavement.

Low maintenance costs, no skilled labors needed.

Variety designs to enhance the vivacious style of road.

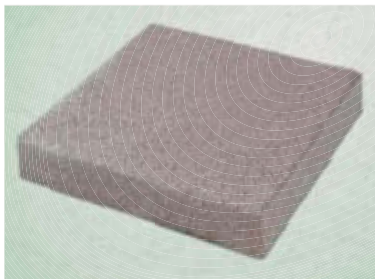
- Use glass and ceramic wastes as aggregate. Features excellent abrasion resistance, ventilation, permeability, water preservation, heat insulation, and sound absorbency as well as great stability.
- Excellent permeability and ventilation increase water-preservation of the stratum, also facilitates in draining floods and controlling temperature.
- Porous aggregate composite provides excellent sound absorption by preventing indoor echoes.
- Rough surface helps prevent slip to enhance pedestrian safety.

Excellent Wear Resistance and Water Permeability to Enhance Rainwater Drainage



size : 90×30×6cm
Wood grain imitation (*)

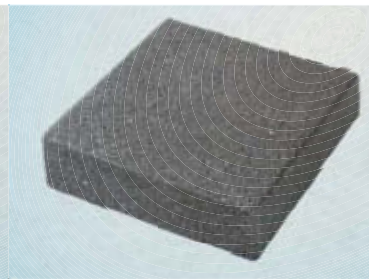
size : 30×30×6cm
Wood grain imitation (*)



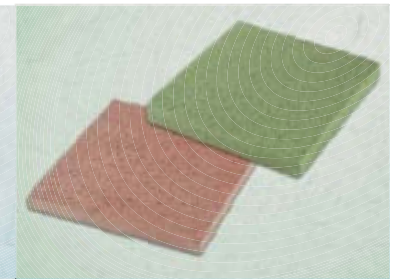
size : 30×30×6cm



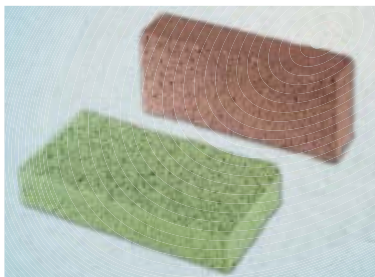
size : 30×30×8cm



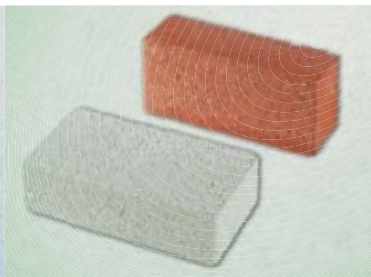
size : 25×25×6cm



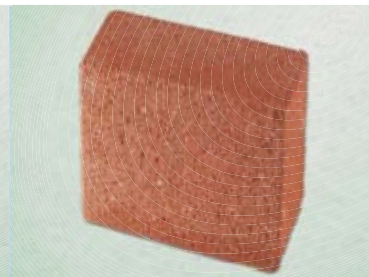
size : 30×30×2cm
B (*)



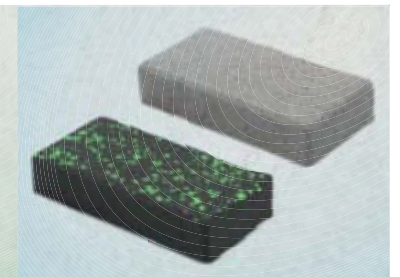
size : 10×20×6cm



size : 10×20×8cm



size : 20×20×6cm



size : 10×20×4cm
Model : C1 luminous

(*) : Non Water Permeable

Color depends on actual object.

Dimension could be specified by client.

Colorful~Prettify the street

Able to fix and anchor the edge trim, beautify the green belt and border it from the sidewalk
Green Building Material with high performance of water permeability, durability and safety.

Technical Data (Water Permeable Bricks)

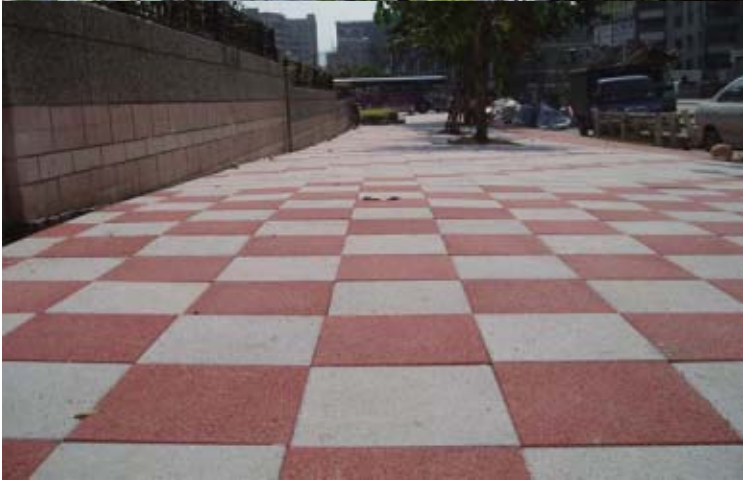
Item	Results
Composition	> 80% recycled material
Bulk Density	> 1.5 g / cm ³
Compressive Strength	> 350 kgf / cm ²
Water Permeability	> 1x 10 ⁻² cm / sec
Asbestos Identification	None

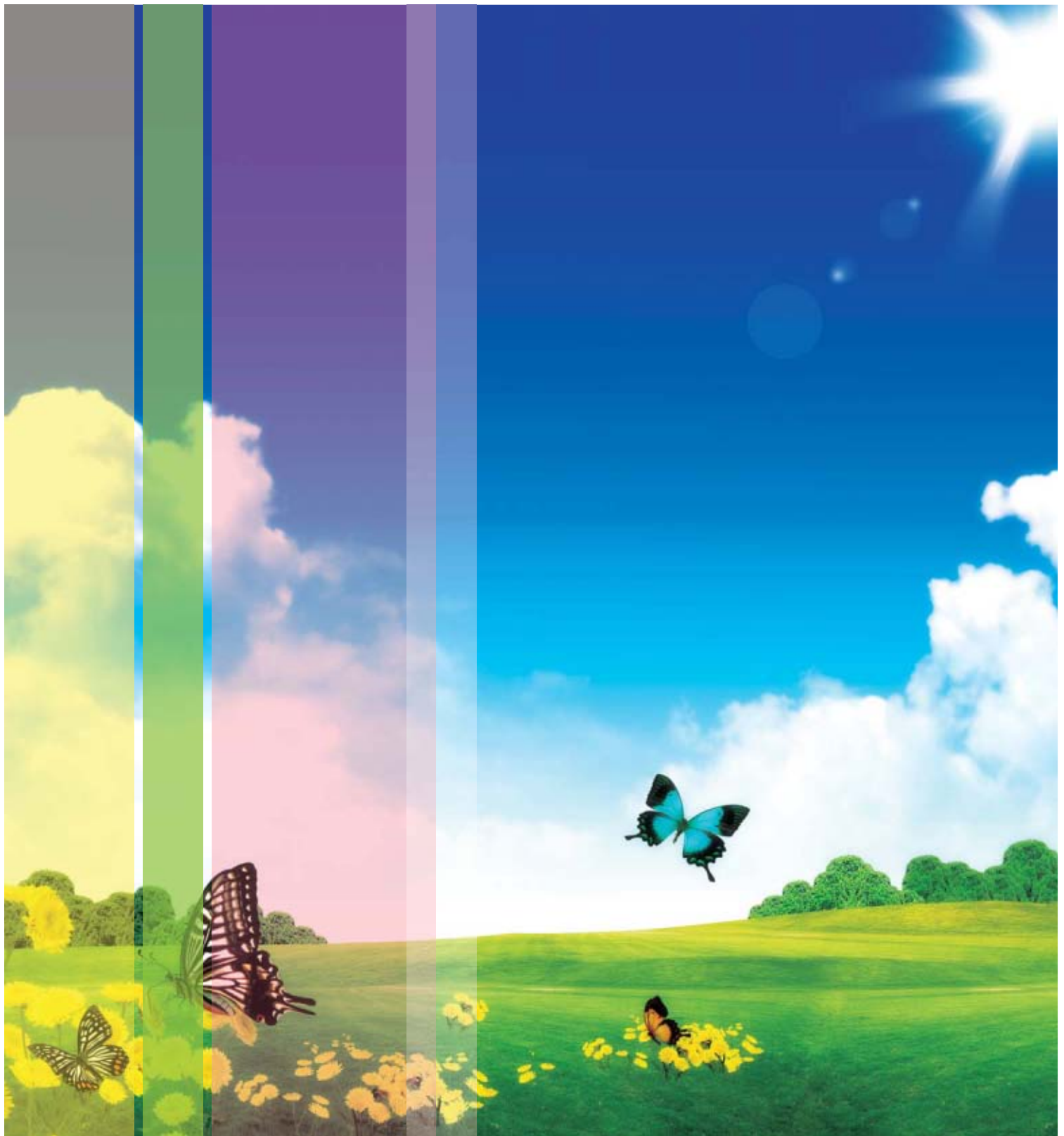




05







宙峰有限公司
HPB TECHNOLOGY CO., LTD.

3F, No. 199-3, Sec. 3, Chung Hsiao E. Rd., Taipei City 106, Taiwan
Tel : **+886-2-2752-6181** Fax : **+886-2-2752-6096**
Email : **hpb.tech@msa.hinet.net** Website : **www.hpb.com.tw**



欲知更多環保建材
請掃描左邊QR Code